

SGG PLANILAQUE[®]
EVOLUTION

*High durability
lacquered glass*



SGG PLANILAQUE® EVOLUTION

A touch of refinement for interiors !

Applications

SGG PLANILAQUE EVOLUTION unites coloured lacquer with the brilliance of glass. It brings colour and ambience to interiors and is particularly suitable for more demanding locations, such as bathrooms and kitchens.

In homes, offices, hotels, shops and museums, for example, SGG PLANILAQUE EVOLUTION creates smooth, homogenous surfaces as wall-panelling, in furniture and in wardrobe and cupboard doors.

Advantages

- **Contemporary colours**

The SGG PLANILAQUE EVOLUTION range comprises eight shades; three light shades, contrasting with four bold colours and one intense black. These radiant and sophisticated colours are in harmony with the elegance of natural materials ... wood, metal and stone.

- **Resistance to humidity**

Thanks to the special composition of the lacquer, SGG PLANILAQUE EVOLUTION can be used in high humidity rooms, such as kitchens and bathrooms.

- **Durability**

As the lacquer is applied to the back of the glass, it is protected from damage, ensuring the durability of SGG PLANILAQUE EVOLUTION's colours. Its brilliance is far superior to that of gloss paints.

- **Safety**

Where the use of safety glass is required, a safety film-backed version is available, SGG PLANILAQUE EVOLUTION SAFE.

A stylishly subtle note of colour for this sliding door (SGG 01 Almond Green)



A durable and aesthetic cladding solution for walls and doors (SGG 12 Extra-White)



Wall-panelling designed for humid rooms (SGG 01 Almond Green)



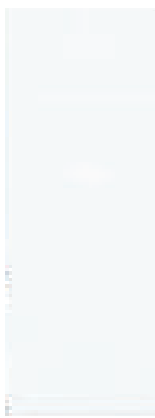
Range

Thicknesses : 4 and 6 mm

Dimensions: 3210 x 2400mm;

Weight :10kg/m2 for 4mm, 15kg/m2 for 6mm

Colour palette



sgg 12 Extra-White



sgg 02 Ivory



sgg 01 Almond Green



sgg 21 Opera Red



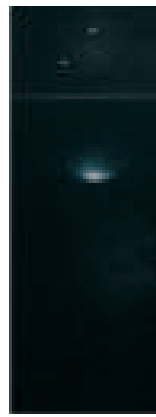
sgg 03 Solar Yellow



sgg 15 Mint Green



sgg 09 Aqua Blue



sgg 20 Black

Sobriety and elegance (sgg 20 Black)



Transformation

SGG PLANILAQUE EVOLUTION can be cut, edgeworked and drilled like ordinary silvered glass.

When cutting the glass, place the sheet with the lacquered face down on a clean cutting table to avoid damaging the lacquer.

SGG PLANILAQUE EVOLUTION can be customised by cold-painting decorative patterns or logos onto the glass surface. It can also be sandblasted and engraved. Different effects can be achieved, depending on whether the glass or lacquered face is treated.

Installation

● Simple and quick installation.

SGG PLANILAQUE EVOLUTION can only be used in interior applications and must comply with current national regulations.

SGG PLANILAQUE EVOLUTION can be glazed :

- mechanically, either into glazing channels or trims, or with appropriate fixing screws.

- adhesively, using neutral translucent silicones or adhesives, or double-sided white adhesive pads. If in doubt of the compatibility of the adhesive, it is essential to test its reaction with the lacquer (and safety film backing if appropriate). We strongly recommend also using mechanical restraints, such as top and bottom j-channels, in conjunction with any adhesive glazing.

SGG PLANILAQUE EVOLUTION must not be fitted directly in front of nor behind a strong source of heat, eg a cooker hob.

● Maintenance

Clean regularly with a soft, clean cloth and a regular glass cleaning product (neutral and non-abrasive).

Tips for successful installation !

Whatever technique is used for fixing SGG PLANILAQUE EVOLUTION, you must always:

- install the product in front of an opaque surface, with the lacquered face towards the wall.

- fix the lacquered glass to a supporting wall or surface that is true and flat, clean, dry and free of any aggressive agents.

- place any of the light coloured lacquered glasses in front of a uniformly pale surface.

- avoid locating the glass too close to intense sources of heat. If used near to a heater for example, the temperature of the wall must not exceed 45°C.

In kitchens, do not allow the glass to come in to direct contact with flames or strong heat sources eg ovens, cooker hobs, very hot utensils or pans.

- allow a gap of 1 - 2mm between the edges of two glass panels.

- ensure that moisture is not allowed to collect behind the glass, either by allowing sufficient drainage and ventilation, or alternatively seal the perimeter with a suitable material.

SGG PLANILAQUE EVOLUTION SAFE

● Safety glass

A safety film can be applied to the back of the lacquered glass. In the event of breakage, the glass remains adhered to the film, reducing the risk of injury.

● Installation

If adhesively glazed, ensure direct contact between the glass and the adhesive pads.

Distributor


SAINT-GOBAIN
GLASS

Saint-Gobain Glass India Ltd
Marketing Department
A-1, SIPCOT Industrial Estate,
Sriperumbudur,
Tamilnadu 602 105. India.
Tel: 91-044-27162832-39
Fax: 91-044-27162841

www.saint-gobain-glass.com
interiors@saint-gobain.com