



GLASSMATE®
Everything for glass

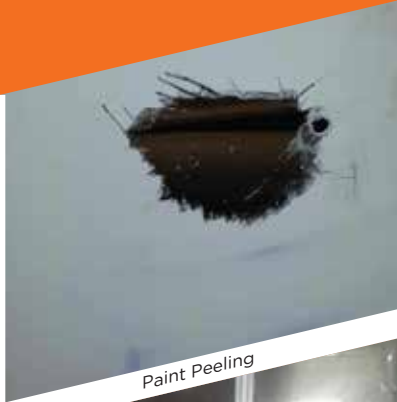
EVERYTHING FOR GLASS



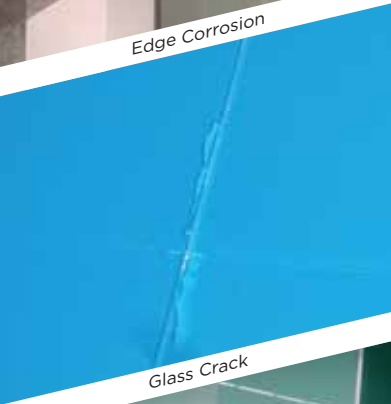
What happens when we don't use the right methods of glass installation?



Edge Corrosion



Paint Peeling



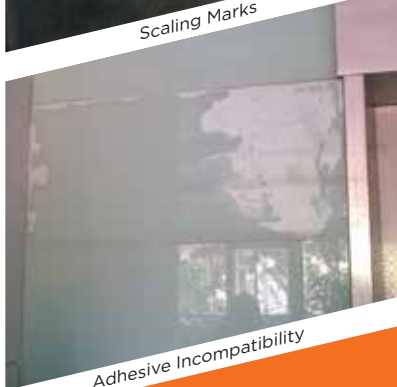
Glass Crack



Scaling Marks



Shade Variation



Adhesive Incompatibility

*Find the perfect solution for
glass installation in **GLASSMATE!***

What do we mean by perfect
glass installation?

Installation that:



Saves time



Saves cost



Is safe



Looks great



Is easily done

GLASSMATE offers solutions
across categories such as **Silicones,**
Tapes, Advanced Fixing Solutions
and Surface Protectors.

SILICONES

PRIMAFIX

Fixing Mirrors? Think Primafix!

The best of alkoxy based neutral silicone with superior bond strength.



ULTRAFIX

Fix any glass. Anywhere. In minutes.

High performance alkoxy based neutral silicone with unmatched bond strength.



TAPES

DOUBLE SIDED TAPE

For instant, hassle-free glass fixing

A fast fixing must-have for all glass applications, that gives long-lasting results.



MASKING TAPE

Introducing the No Marks masking tape

High performance auxiliary support for glass fixing, that ensures no adhesive traces are left after removal of tape.



CLEAR PARTITION TAPE

Quick, clean glass joint filling

Clear acrylic partition tape allows instant fixing, great aesthetics and acoustic properties, that assures long term adhesion and transparency with easy installation.



ADVANCED FIXING SOLUTIONS

PLANICLIP

No more plywood and messy adhesives!

Planiclip brings together three types of clips (I, J1, J2), designed in a unique pattern to make glass installation hassle-free.



SURFACE PROTECTORS

EDGE SHIELD

For ultimate mirror protection

Surface protector that safeguards mirrors against corrosion.



PRODUCT	DESCRIPTION	AVAILABLE VARIANTS	MRP
---------	-------------	--------------------	-----

SILICONES

Primafix	300 ml silicone sealant cartridge	Colours: White, Black, Grey	₹285
Ultrafix	280 ml silicone sealant cartridge	Colours: Clear	₹350

TAPES

Mirror Mounting Tape*	Double sided tape	L 5 m x W 24 mm, Thickness 1.5 mm L 2.5 m x W 12 mm, Thickness 1.5 mm	₹785 ₹490
Masking Tape*	144 mm Sleeve	L 20 m x W 18 mm L 20 m x W 24 mm	₹230 ₹230
Partition Tape*	Clear acrylic tape	L 8.25 m x W 6mm L 8.25 m x W 8 mm	Available on request

ADVANCED FIXING SOLUTIONS

Planclip System	Polycarbonate Clip	J1 Clip, J2 Clip, I Clip, Backing Foam	Available on request
-----------------	--------------------	--	----------------------

SURFACE PROTECTORS

Edge Shield	150 ml Cartridge	None	₹700
-------------	------------------	------	------

*Other dimensions available on request



**Saint-Gobain India Private
Limited - Glass Business**

Level 7,
Sigapi Aachi Building,
18/3 Rukmani
Lakshmiipathy Road,
Egmore, Chennai - 600 008,
Tamil Nadu.
Ph: +91-44-4593 6000
Fax: +91-44-4593 6008
<http://in.saint-gobain-glass.com>